

No EXTRA MOPS POINTS for correct answers.

The obvious, the canaries, and the trivia!

The judge's decision (me) is final and no discussion, debate, arguments, bribes or fisticuffs will be entered into!

Are you ready? – 20 questions!
Possible (with bonuses 30 points)

BLOOD

What would be appropriate action(s) for a neutrophil count $< 1.0 \times 10^9/L$?

- Repeat the neutrophil count in 4–8 weeks
- Consider medication effects
- Look for other blood count abnormalities
- Urgent referral for all patients
- Urgent referral if patient is febrile or unwell

1 point

What is this – on the lower leg, - Differential Diagnosis (2) ?

1 + Bonus 1



Bonus point for this one too!
Palm of an adult hand. 2
points



Primary Diagnosis?

**John, 42 years, is an area sales manager.
"Chesty as a child" - Smoker - 10 pack years.
He suffers from frequent "chest infections".**

Spirometry

FEV1 = 3.24 (76% pred)

FVC = 4.82 (91% pred)

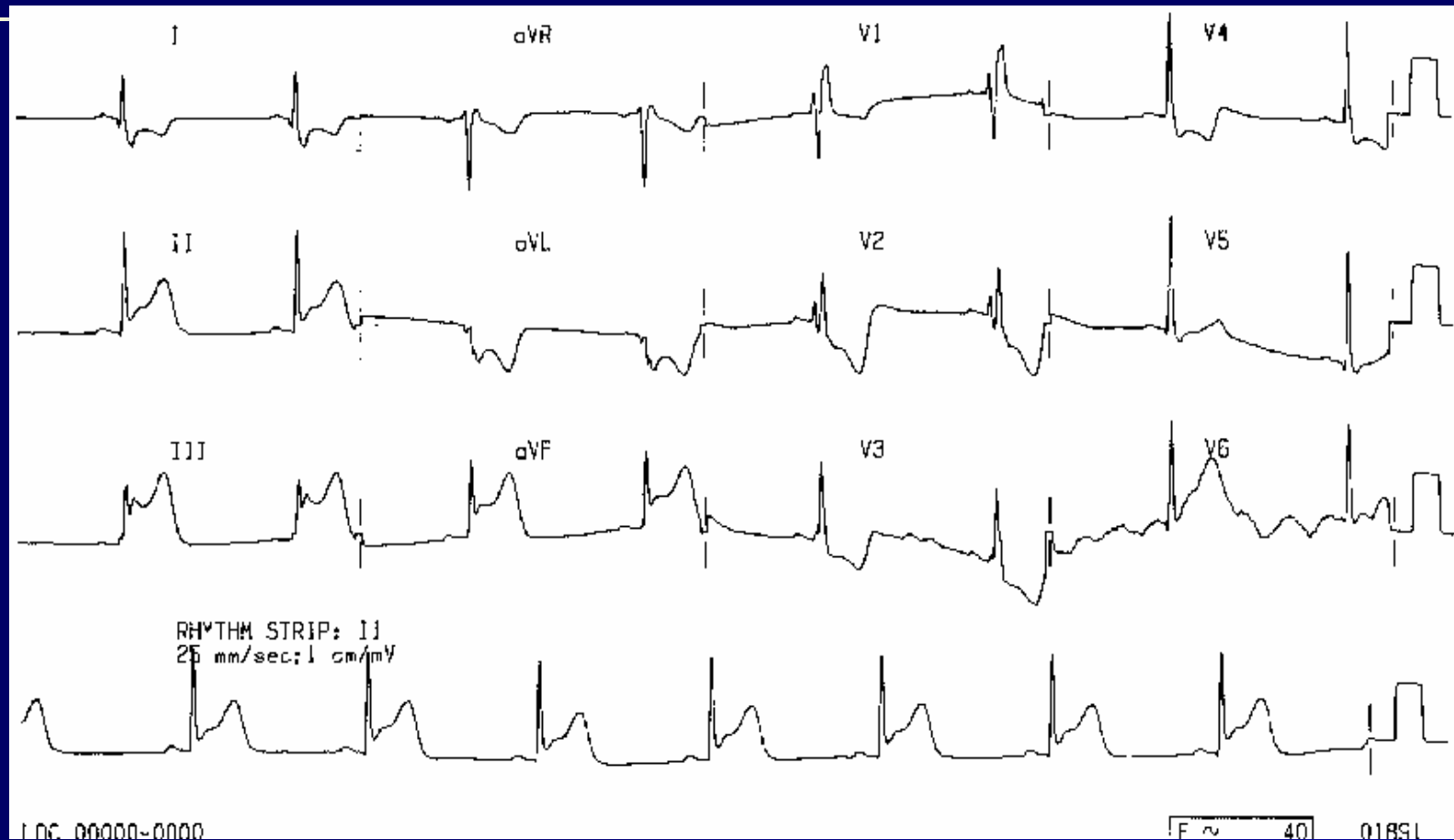
FEV1/FVC = 67%

Post bronchodilator

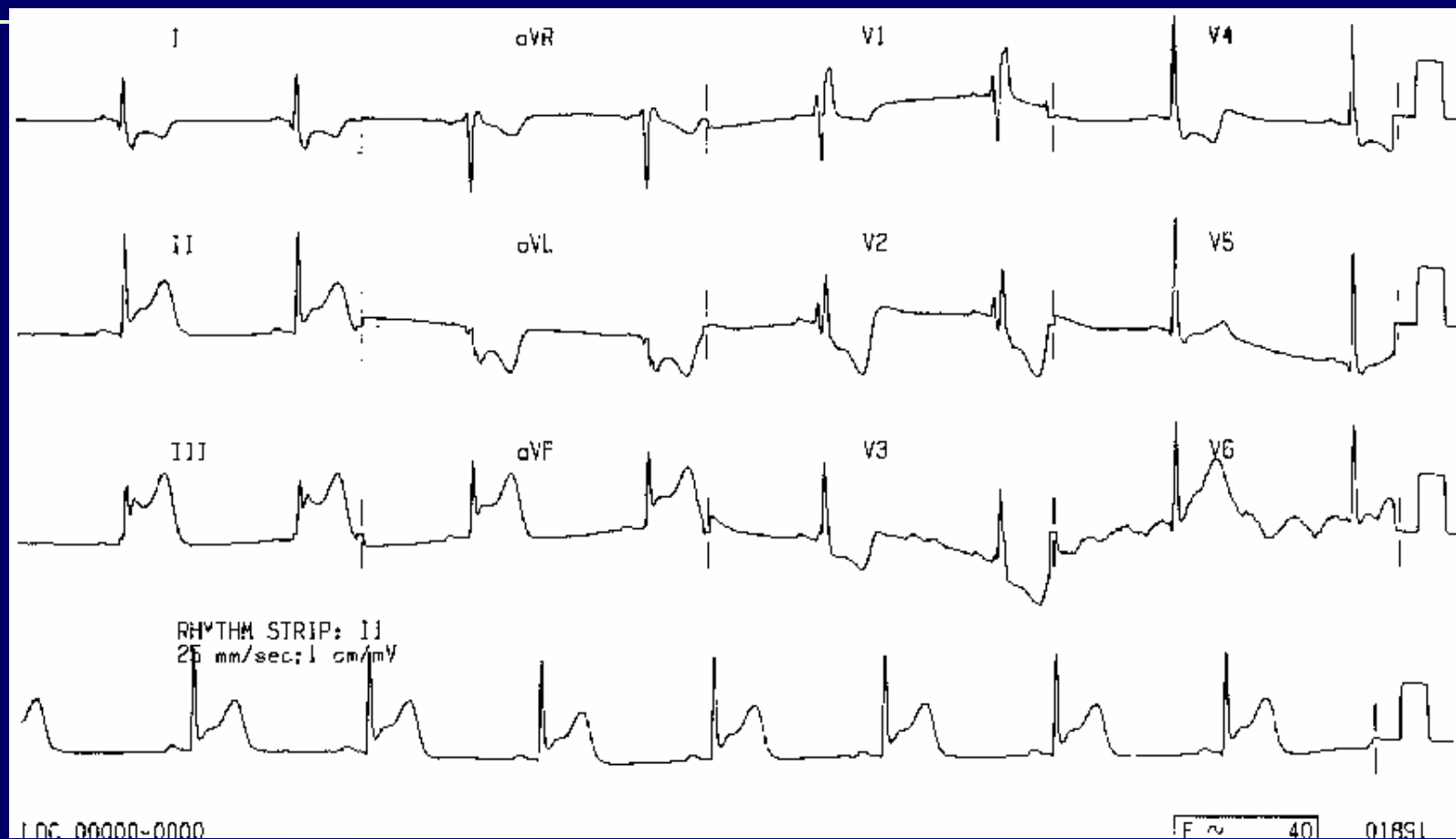
FEV1 = 4.17 (29% improvement)

1 point

What sort of infarct? (1 point)



Why? 3 points.



Which tricyclic is least toxic for the elderly.

1 point

Who is the new prime minister (not president) of Russia?

2 points

What is the best drug for treating depression in the elderly

- **SSRI antidepressant**
- **Tricyclic**
- **Monoamine oxidase inhibitor**
- **St John's Wort**

1 point

Diabetic neuropathy involves

- **Sensory neuropathy**
- **Motor Neuropathy**
- **Autonomic neuropathy**
- **All three**

1 point

**What is this – it followed
an injury**

2 points



Parkinson's Disease

Which or the following could be an early indication of Parkinson's Disease?

- Anosmia
- Frozen shoulder
- Abnormalities of REM Sleep
- All of these?

1 point

In 1847 Ignaz Semelweis an Austrian obstetrician introduced regular hand washing.

Maternal mortality fell from 18% to

- 13%
- 10%
- 5%
- 2%

1 point

Which of the following factors are associated with an increased risk of falls in the elderly

- Depression
- Antidepressants
- Benzodiazepines
- Exercise

2 point

When screening for thyroid function,
what is the test of choice?

1 point

Including wisdom teeth (8's) how many teeth are there in the human mouth

- 28
- 32
- 40
- 36

1 point

In most cases, what is the most effective intervention in metabolic syndrome?

2 points

If a patient presents with gout, what should you also screen for?

2 points

Which of the following interventions is likely to produce the greatest reduction in cardiovascular risk?

- Control of hypertension
- Increasing exercise
- Lipid control
- Smoking cessation.

1 point

DIFFERENTIAL DIAGNOSIS? (2 x)



2 points